

 **DLP EXPO ASIA** 8<sup>TH</sup> EDITION  
DAIRY LIVESTOCK AND POULTRY EXPO

**AgroFarm** DLG  
**INDIA**

**04 05 06**  
SEPTEMBER 2020

Venue: Gandhinagar,  
Gujarat, INDIA

# ABOUT GPDFA



- ▶ GPDFA is the Pioneer organization working for the overall development of dairy farmers of Gujarat.
- ▶ It was established in 2010 under technical support of AMUL, Government & Semi Governments.
- ▶ Keeping in view the need of introducing new technology advance and entrepreneurship in dairy.
- ▶ GPDFA Enables all necessary Information to grow their dairy farms technologically will the help of the national and international companies.
- ▶ GPDFA Aims to create a new wave in dairy industry as a whole and aims to serve all Progressive Farmers to be benefitted by this organization.



## NETWORKING



- ▶ This is the most comprehensive forum where international Dairy, livestock & Poultry industries executives, academia, institutional investors, venture capitalists, analysts, progressive farmers and other experts will have the opportunity to shape the future collaboration landscape of technology
- ▶ Registration on our website allows you to manage your meetings and at the same time profile yourself in the way that will attract potential business partners, investors and friends & This enables to pre-arrange one-on-one meetings in your desired areas.

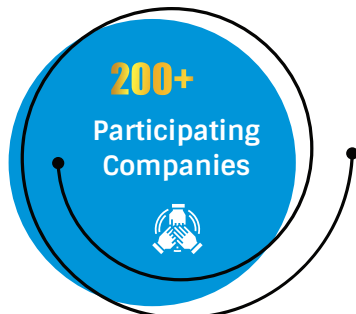
# SCENARIO OF DLP INDUSTRY IN INDIA



- ▶ India is World's highest livestock owner at about 512.05 million species.
- ▶ It also provides employment to about 8.8 % of the Indian population, majority of which is women.
- ▶ India is the highest milk producer in the entire world.
- ▶ Post Liberalization, the output of Dairy Industry in India is growing at 5% per annum. Currently, we are producing more than 13% of the total milk production of the world, yet the per capita milk availability is comparatively low.
- ▶ Poultry industry, which started as a backyard activity, has now transformed into a well organized, scientifically oriented and technologically driven industry. Today, our Poultry industry is growing at around 10% per annum.



## ▶ IMPORTANT FACT & FIGURES



## ▶ PARTICIPATING COUNTRIES



INDIA



BRAZIL



ITALY



GERMANY



LATVIA



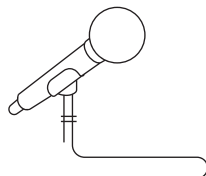
ISRAEL



MALAYSIA



JAPAN



Specific Dairy & Livestock farmers centric Seminar was organized on 7th September along with the exhibition where Milk & Livestock farmers took part from all over India. Seminar covered various technical aspects related to Dairy & Cow Based Business Industry, Dairy Farming & Use of medicine for animals, Ideas & Use of feed for animal, Semen & calf management & Hygienic Milk production guidelines were the major focus.

## ➤ Conference & Seminar covered below topics:

- Investment Opportunities in Cow Based Industries
- Use of Homeopathy Medicines in treating Dairy animals
- Importance of Silage in Dairying
- An Experience of Dairy Farm Management
- Latest Advancement of Semen Sexing Technologies
- Feeding of Moringa for Sustainable Dairy Farming
- Importance of Scientific Calf Rearing
- Use of feed & feed supplements to improve productive & Reproductive performance
- How to Reduce the Cost of Milk Production
- Use of Ethno Veterinary preparation in treating Dairy animals



# WHAT'S WAS NEW IN DLPE ASIA 2019



## ➤ Robotic Milk Collection Unit

Launching of Robotic Milk collection unit was launched by Krishna Allied Industries Pvt. Ltd. For the first time in Gujarat.



## ➤ New Feed Launched by Boehringer

Boehringer Ingelheim India Pvt. Ltd. Launched new feed for the first time in India called EPRINEX® POUR-ON.



## ➤ Goat Feed Launched by De Heus India Priv. Ltd.

De Heus India Priv. Ltd. Launched Goat Feed first time in India during the exhibition.

## ➤ MAJOR PARTICIPANTS



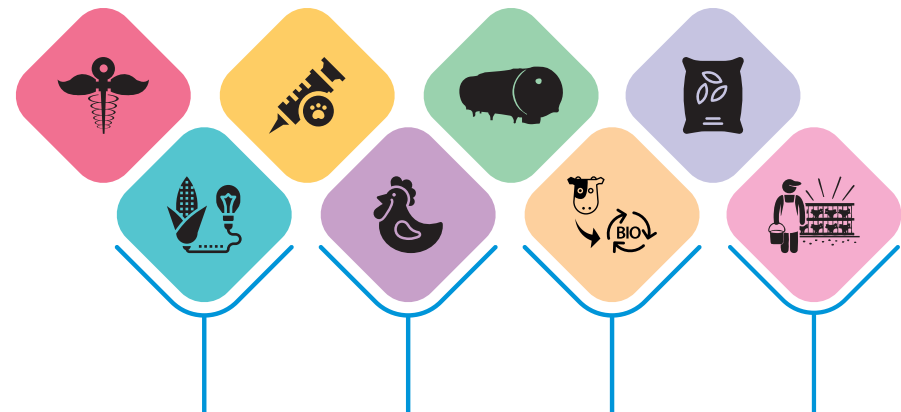


## Exhibitors Profile

- ✘ Animal Nutrition Companies
- ✘ Animal Pharmaceuticals
- ✘ Automation & Software Solutions Providers
- ✘ Biomass Energy Solutions Providers
- ✘ Breeding / AI & other Veterinary Equipment
- ✘ Cold Chain & Refrigeration Technology
- ✘ Cryogenic Tanks Manufacturers
- ✘ Dairy, Poultry and Livestock Farming Complete Solutions Providers
- ✘ Dairy, Poultry and Livestock Farming Consultants
- ✘ Dairy Farm Machine
- ✘ Dairy Farming Equipments
- ✘ Dairy Processing Machinery
- ✘ Disease Diagnostics Equipment
- ✘ Filling and Packaging Machinery Manufacturer
- ✘ Filling and Packaging Solutions Providers
- ✘ Feed & Feed Additives Manufacturers
- ✘ Hygiene and Sanitation Equipments Manufacturers/Suppliers
- ✘ Milking Machine Manufacturers
- ✘ Milk Storage Tanks Manufacturers
- ✘ Milk Testing & Quality Management Machines Manufacturers
- ✘ Poultry & Livestock Equipments Manufacturers
- ✘ UHT Plant Manufacturers
- ✘ Waste Disposal Machinery Manufacturers
- ✘ Waste Disposal Solutions Providers

## Visitors Profile

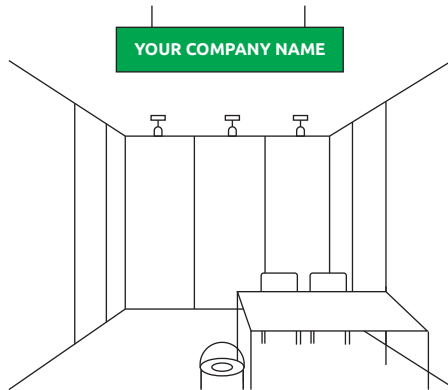
- ✘ Banking, Financing and Insurance companies
- ✘ Co-operative Federation Authorities
- ✘ Dairy, Poultry and Livestock Farmers
- ✘ Dairy, Poultry and Livestock Entrepreneurs
- ✘ Dealers / Distributors / Wholesalers / Traders / Consultants
- ✘ Government Authorities
- ✘ Government and Private
- ✘ Gram Panchayat
- ✘ Hotels & Restaurants Owners/Managers
- ✘ NGOs,
- ✘ Quality Controller
- ✘ Research and Development Professionals
- ✘ Universities
- ✘ Veterinary Hospitals & Clinics
- ✘ Veterinarians



# STALL PARTICIPATION COST



## Standard Stand Construction



INR 8,500 per m<sup>2</sup> + GST  
\$ 200 per m<sup>2</sup> + GST

\*Current Applicable Rate Of GST Is 18%  
(minimum Occupying Area 9 m<sup>2</sup>)

### Standard Stand construction package includes:

- ◆ Side walls, fitted in standard booth system frame.
- ◆ Fascia board with company name and stand number in standard lettering · 1 table and 2 chairs · 3 spot lights.
- ◆ Waste basket · electric supply up to 1 HP (single phase) by 5 AMP plug point · general cleaning of aisles.
- ◆ Pavilion security during the exhibition.
- ◆ Entry to the exhibition catalogue and website.

## Raw Space



INR 7,500 per m<sup>2</sup> + GST  
\$ 175 per m<sup>2</sup> + GST

\*Current Applicable Rate Of GST Is 18%  
(minimum Occupying Area 36 m<sup>2</sup>)

### Raw Space package includes:

- ◆ Floor space without carpet. ◆ Entry to the exhibition catalogue and website.
- ◆ Electric supply up to 1 HP (single phase). ◆ General cleaning of aisles.
- ◆ Pavilion security during the exhibition.
- ◆ 30% is the booking amount which is non refundable. (Air travel, accommodation, visa and local transportation are not included in above cost)
- ◆ Any stall fabrication agencies working on behalf of Exhibitor, will have to pay refundable deposit before taking stall possession as under:

➡ For stall sizes up to 50 M<sup>2</sup>: Rs. 25,000/- | For stall sizes in between 50 M<sup>2</sup> to 100 SQM: Rs. 50,000/-

# WHY GUJARAT?



The growth of the Animal Husbandry sector has resulted not only in increased milk production but has also provided a boost to the overall Agro-Economy of the State.

- Gujarat holds huge resources of Cattle and Livestock.
- Gujarat stands 4th among Milk Producing States in India.
- Gujarat has estimated Annual Production of 60 Million Broilers.
- Gujarat has estimated 1455 Million Eggs Production during 2013-14.
- Gujarat has estimated Annual Fish Production of 7,93,000 tons during 2013-14.



## Concurrent Events



## DLPE 2019 Supported by



## Organized by



## FOR ANY FURTHER INFORMATION, PLEASE CONTACT:

### Radeecal Communications

402, 4th Floor, "Optionz" Complex, Opp. Nest Hotel, Off C.G. Road, Navrangpura, Ahmedabad - 380009, Gujarat, INDIA.

PH: 079-26401101/ 02/ 03 | M: +91 75670 75522

E: [asia@dlpexpo.com](mailto:asia@dlpexpo.com) | W: [www.dlpexpo.com](http://www.dlpexpo.com)